







TAU 15|12

Exceptional imaging
begins here



ANATOMY REVEALED.

- 1. LIVE IMAGE SIZE** | Expect exceptional diagnostic imagery with a 30.5cm x 24.1cm live image to see fine details of anatomy with vivid clarity.
- 2. 24" MONITOR** | See more on-screen content with a resolution of 1920 x 1200 in bright detail for an immersive imaging experience.
- 3. ORTHOTOUCH™ 2.0** | Advanced touchscreen interface.
 -  Color interface
 -  Anatomical selections
 -  Touch support
 -  Pediatric software
- 4. ON-SCREEN HELP** | Description of common system functions available directly on-screen.
- 5. MONITOR ARM** | Allows for easy adjustment of monitor and keyboard for viewing of anatomy while sitting or standing.

Intelligent Dose Reduction

Do more. Dose less.

At Orthoscan, we understand your concern about radiation exposure and the demand for high-quality images. That's why the TAU family includes cutting-edge Intelligent Dose Reduction technology that provides the best in diagnostic image quality while reducing exposure to you and your patients.

IMAGING, EVOLVED.



Over-rotation

A mini C-arm that works with you, not against you

An expanded orbital rotation of 160° allows preferred views of anatomy to be obtained without patient discomfort. Whether you're imaging children or adults, a 50.5cm arc depth provides the necessary space to position patients of all sizes. Get all the flexibility you need with an improved umbilical cable, allowing you to easily maneuver the C-arm in the surgical field. Combined, these features simplify and improve your work flow.

Size and storage

Big capability, small size

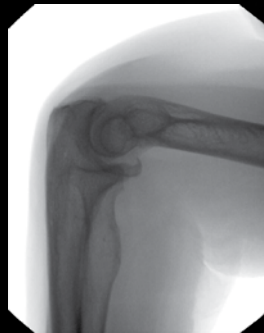
Lighter and smaller than competitive equipment, Orthoscan's TAU family is keeping the mini C-arm mini. While in compact mode, storage and maneuvering through restrictive spaces is effortless and a 3-way braking system provides mobility and stability during positioning.



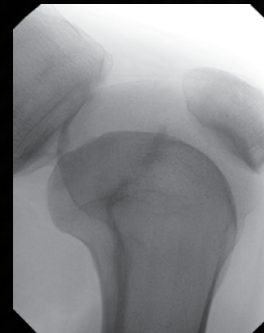
Hand Imaging



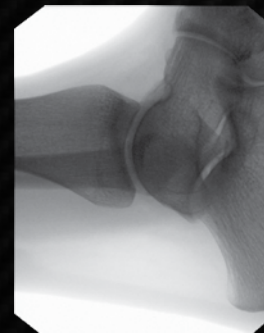
Foot Imaging



Elbow Imaging



Knee Imaging



Ankle Imaging



PEDIATRIC INDICATION

Designed for use with pediatric patients



BILATERAL CONTROLS

Improved functionality for the sterile field with back-lit controls



SURGICAL LED LIGHTS

Provides additional illumination on the anatomy



ENHANCED SECURITY

Work confidently with protected data in the modern healthcare environment

OPTIMIZED DOSE FILTER

- Only mini C-arm with pediatric indication
- Reduced dose while maintaining image quality
- Reduced exposure to surgeons & patients



NEXT GENERATION CMOS

- Increased DQE efficiency
- Improved image brightness & quality
- Dose reduction & decreased ramp time
- Mag Mode maintains image quality without dose increase



Up to
66%
Cumulative
Dose Reduction
can be achieved**

MODEL NUMBER: 1000-0015

MONITOR

Display size	24" LCD
Primary "live" image	30.5cm x 24.1cm
Dual reference image	12.7cm x 10.2cm
HDMI	✓

DETECTOR

Type	CMOS detector
Detector size	15cm x 12cm

X-RAY GENERATOR

kV range	40 - 78 kVp
mA range	0.040 - 0.160 mA
Operating mode	Continuous

ELECTRICAL

Sterile field controls	Bilateral
Multifunction wireless foot switch	✓
Laser alignment	✓
Surgical LED lights	✓

DOCUMENTATION

Wireless communication	Optional
DICOM 3.0 compliant	✓
Printer	✓

MECHANICAL

Weight	215.5kg
Height	122cm
Footprint (W x L)	73.7cm x 83.8cm

ADDITIONAL FEATURES.

1. USER-FRIENDLY CONNECTIVITY | Easy access to the power button and I/O ports directly on top of the chassis.

2. THREE-WAY BRAKE CONTROL | Maneuver your system with ease down hallways, around corners, and in the operating room.

3. INTEGRATED CABLE PUSHERS | Protects power cords and other cables from being damaged.

+ UPGRADED SERVICEABILITY | Redesigned from the inside out to reduce service maintenance time.

+ KEEPING IT MINI | A lightweight frame in addition to compact design simplifies storage and transportation in restrictive hallways or rooms.



ORTHOSCAN



www.orthoscan.com



+1.480.503.8010



+1.480.503.8011



14555 N 82nd St. Scottsdale, AZ 85260, United States

Orthoscan and Orthotouch are registered trademarks of Orthoscan, Inc. Product features and specifications are subject to change without notice. 110-0229 Rev D, 12/9/2019 © 2019 Orthoscan, Inc. * Using Intelligent Dose Reduction (with Cu filter) when compared to Orthoscan 1000-0004. † In continuous mode, users will not attain the stated levels of cumulative dose reduction possible with that offered in pulsed fluoroscopy. In clinical practice, the use of IDR may reduce patient dose depending on the clinical task, patient size, anatomical location, and clinical practice. A consultation with a radiologist and a physicist should be made to determine the appropriate dose to obtain diagnostic image quality for the particular clinical task.

